



SEEN

UNSEEN

ability

Triangle, Inc.



Welcome to the Studio!





Run of Show

Introducing Triangle

John Kaiser

Chief Development Officer, Triangle

VR Gallery Tour

Painting Demo, Q&A

...with giveaways & conversation throughout



Triangle's Impact



FROM OUR CHIEF EXECUTIVE OFFICER



"No other disabilities service provider in Massachusetts can match Triangle, Inc.'s unique and innovative combination of programs. Regardless of their age, background, or ability, each of our participants receives support that fosters both their personal and professional goals while being connected, empowered, and engaged with their local communities. As we approach nearly 50 years of service to individuals with disabilities and their families, I am proud to lead Triangle, Inc. as it meets its mission in 2020 and beyond."

-Coleman Nee
Chief Executive Officer

OUR SERVICES

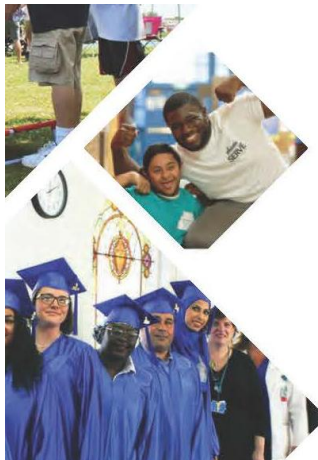
With each passing year, our services evolve to better meet the needs of all Triangle, Inc. participants.

Our **Community-Based Day Services and Supported Employment** programs in Malden, Randolph, and Salem place a strong emphasis on employment while supporting personal growth, healthy living, and community exploration activities.

Triangle's **Residential Services** continue to provide a loving, caring, and nurturing environment to 44 individuals.

Our **Workforce Development** and **Career Services** team provide innovative solutions to individual job seekers and inclusive employers to create win-win job placements throughout eastern Massachusetts.

Empowering People for Inclusive Communities (EPIC) and **IMPACT** Boston continue to provide community service, leadership development, personal safety training, and healthy relationship lessons to thousands of people throughout the Commonwealth.



COMMUNITY

We provide access to local communities so that our participants are active and connected to the networks and resources that are most relevant to them.



EMPLOYMENT

We put people to work in the community through skill building and job readiness assessments, interview prep, internships, group employment, job coaching, and competitive employment.



EMPOWERMENT

Our participants complete leadership development opportunities, community service projects, education sessions about human rights, and safety and self-advocacy training.



INDEPENDENCE

Through shared living and our residential homes, travel training, and day programming for retired adults, we encourage all members of the Triangle community to engage in their natural interests, and help provide them with a variety of experiences.



Triangle's Impact



FINANCIALS



Sign up for our bi-weekly email newsletter to stay up to date with our latest program offerings, success stories, events, and donation programs at www.triangle-inc.org or at one of our following social media websites:

 Triangle, People with Ability

 TriangleOrg

 TriangleOrg

 TriangleInc

OUTCOMES



Competitive jobs were created in the community in partnership with over 160 community businesses



Individuals with disabilities live in nine loving residential homes



Total individuals were reached by at least one of our programs in 2019

Day services sites that provide programs for DDS, MRC, DTA, and dozens of school districts/ community partners throughout the Commonwealth



Students were served by our IMPACT and IMPACT:Ability classes in partnership with 20 school districts



Young people with disabilities were provided with service learning programs in Boston and Worcester through our EPIC program



Triangle's Impact



FY19 BOARD OF DIRECTORS

Officers

MIKE MORAN, President
CFG Brokerage Network

RACHEL KAPRIELIAN, Vice President
McDonald's Corporation

MARK DEOLIVEIRA, Clerk
The TJX Companies

ROBERT PERRY, Treasurer
Massachusetts College of Art & Design

Directors

JESSICA BLACK
Community Partner

RICHARD CURTIS
Community Partner

REPRESENTATIVE PAUL DONATO
MA State Representative

MICHAEL McCURDY
Brookline Bancorp, Inc.

COLLEEN MORAN
Spaulding Rehabilitation Network

TRIANGLE LEADERSHIP

COLEMAN NEE
Chief Executive Officer

JANICE GRASSIA
Director of Human Resources

JOHN KAISER
Chief Development Officer

JEFF LAFATA-HERNANDEZ
EPIC Executive Officer

JANICE PHILPOT
Director of Workforce Development

MICHAEL MASTASCUSA
Chief Financial Officer

MEG STONE
IMPACT Executive Officer

MELISSA STROUT
Director of Compliance and Integrity

DREW WARREN
Chief Program Officer



CONTACTS & LOCATIONS



Boston
89 South Street
Suite 406
Boston, MA 02111

Malden - Main St.
493 Main Street
Malden, MA 02148

Malden - Pearl St.
420 Pearl Street
Malden, MA 02148
781.322.0400

Randolph
9 Memorial Parkway
Randolph, MA 02368
781.885.0904

Salem - Our new address!
45 Congress Street
Suite 4171
Salem, MA 01970
978.232.3933

RANDOLPH



MAJOR GRANT & SPONSORSHIP FUNDERS





Welcome

Coleman Nee

Chief Executive Officer,
Triangle

John Kaiser

Chief Development Officer,
Triangle

How You Can Help



- 30% of tonight's proceeds through Friday will go to Triangle's Fund For Ability
- Proceeds will be matched
- Natalia will contribute the combined value of the painting raffled in the demo & studio giveaways

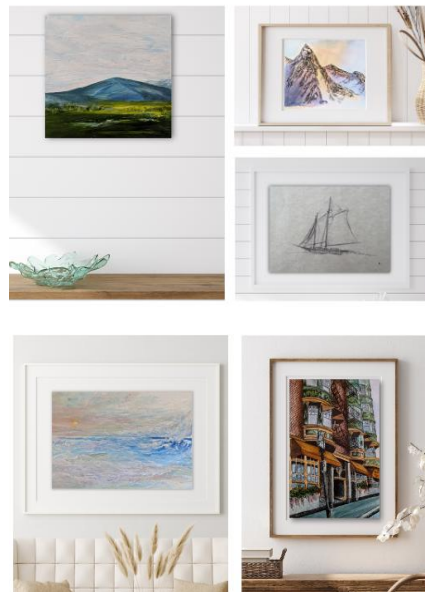


Triangle, Inc.

How You Can Help



*Because together we can do so much
The Studio offers a range of accessible options to support Triangle*



Coasters
2 designs
\$20+

Studio Gift Card
Never expires, save for
any future purchase or
commission
\$25+

Prints
6 Editions
3 sizes
\$60+

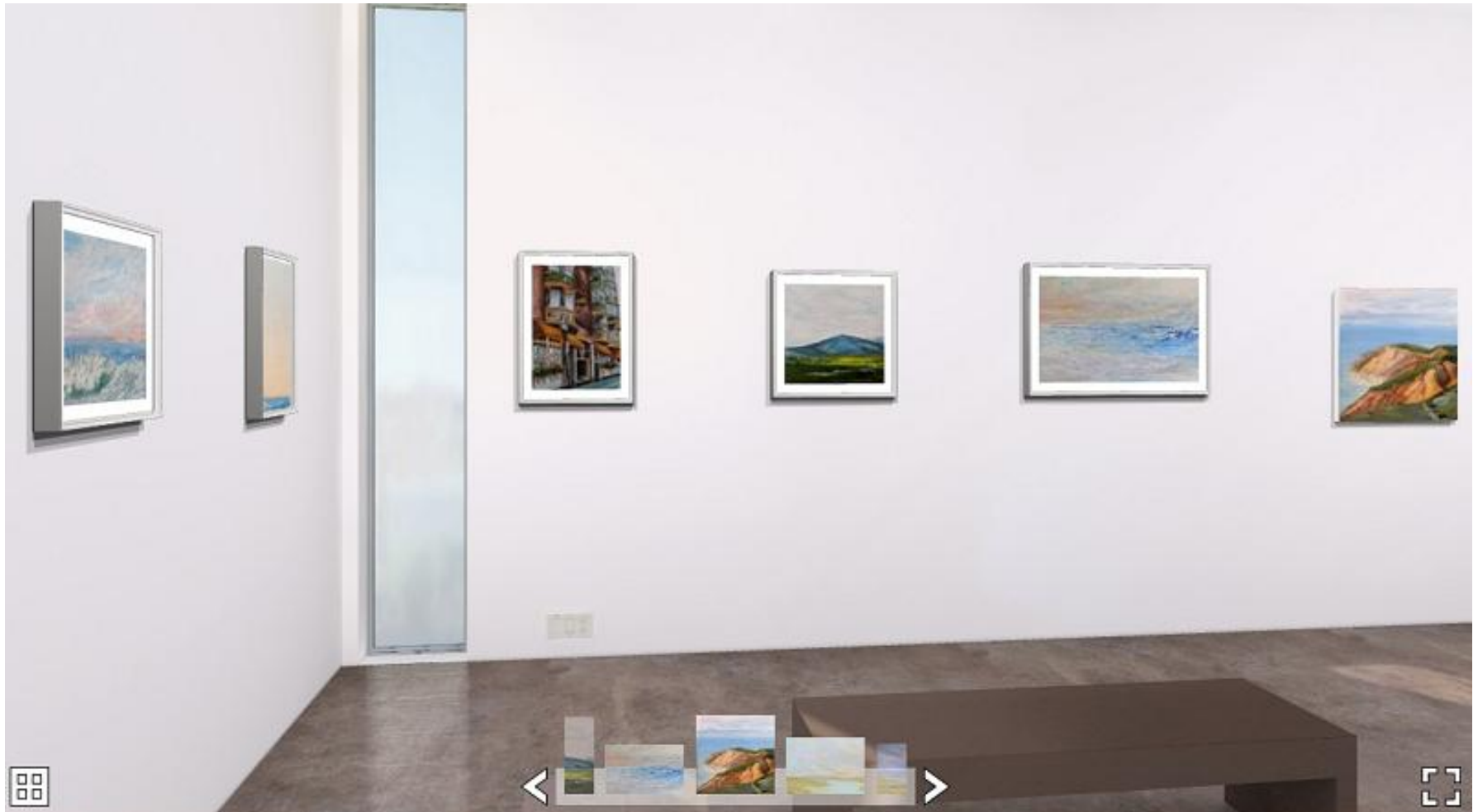
**Holiday Small
Works**
Specially made
for gifting
\$100+

Original Works
To love for a lifetime
\$300+

Now Live at nataliamirabito.com



Virtual Reality Gallery





Thank You for joining us tonight and supporting Triangle!

Contact Natalia anytime for questions about Triangle, her work, or virtual studio visits: nataliamfineart@gmail.com

Follow our journeys on instagram & online at:

@nataliamirabito nataliamirabito.com
@triangleorg triangle-inc.org